

HIGOLD®

HIGOLD FURNITURE MANUFACTURING CO. LTD

Address: No.36,Shunye East Road,Shunde,
Foshan,Guangdong ,China 528325
T +86 757 2738 0273
T +86 757 2738 6277
E: info@higold.com.cn
www.higoldgroup.com www.higold.com

HIGOLD EUROPE HEAD OFFICE

Schokkerweg 5
8042 PC Zwolle
The Netherlands
T: +31 38 421 39 85 / +31 54 851 47 05
E: info@higoldeurope.eu
W: www.higoldeurope.eu

HIGOLD USA CORPORATION

1641 74th ST STE 1, Brooklyn,
New York 11204
Tel: 212-461-0997
E: sales@higoldusa.net
W: www.higoldusa.net



HIGOLD®



OUTDOOR FURNITURE COLLECTIONS 2025



HIGOLD®

VISION

Our Mission: Strive for creating a healthy and satisfying lifestyle for human beings

Rather than just a simple supply and demand company, Higold's ideology is to provide a better and elegant lifestyle with our products. With our unique and innovative product designs, our outdoor furniture gives our customers a better reason to stay outdoors.

Our Core Value: Cooperative, Win-Win, Creative and Leading

As an industry innovator, we wish to have more partners to join us in this great area to achieve a win-win situation by optimizing respective strength and integrating resources; We stick to innovate and sustain business operation with a persistent vigor and vitality, to keep the advantage in being a leading enterprise and to always lead people to a better lifestyle.

Our Objective: Create Higold as an international brand of outdoor furniture and industry innovation leader

With our product's design, innovation, quality and service, we have been increasing the value of Higold's international reputation in the outdoor furniture industry. As a result, customers are able to enjoy the quality and satisfaction of our products. Higold will always be the innovation leader and set as the benchmark in the industry.





HONORS

Red Dot Award Winner 2014

iF Design Award Winner 2020

China Red Star Design Award Winner

China Canton Fair Design Award Winner

Asia-pacific Pinnacle Awards 2017

German GS Quality Inspection Certification

BSCI Certification

British Crown ISO9001 Quality Inspection Certification

Pininfarina Joint Design Institute

National High-tech Enterprise



Reddot Design Award



Red Star Design Award



iF Design Award Winner



Canton Fair Design Awards Winner



2017 Pinnacle Awards Asia pacific Winner



Pininfarina Co-designing institute



GS Quality Test Certification



BSCI certification



ISO 9001 Quality Management Certification



National High Tech Enterprise

DESIGN POWER





Armonia

by pininfarina

The winning combination between Pininfarina and Higold continues through the launch of a new iconic outdoor sofa. After the successes of Bold and Onda, a new masterpiece becomes part of the Higold by Pininfarina family.

“Armonia” has been conceived to bring the elegance of the interior environments to the outdoor spaces, creating a seamless and elegant living experience. The juxtaposition of contrasting elements is the main component around which the design language of this new sofa plays. The use of wood and braided rope gives it an artisanal and classic look, balanced by the modernity of the clean lines and the shaped body. The play of contrasts continues through the dualism between soft and rigid surfaces, full and empty spaces, modernity and past, reflecting the style of Pininfarina centered on the tradition of the new.

Dualities and contrasts, however, are not meant to create splits, but as a constant tension towards a new balance to create harmony. Finally, the use of specially designed materials allows this sofa to be enjoyed in outdoor environments in total safety and ensuring top performance against atmospheric agents without compromising aesthetics and comfort.

“Armonia” joins to the list of products designed by Pininfarina for Higold, a collaboration born in 2017 that over the years has seen two excellences in the field of furniture give ample vent to their creative flair.



Onda

OUTDOOR FURNITURE COLLECTION DESIGNED
BY PININFARINA FOR HIGOLD



Onda was born to blend in different environments and, at the same time, to make them unique.



Being conceived for the outdoor, the Pininfarina design team took the inspiration from the dynamism, elegance and purity of the ocean waves, the empty space that is created when a wave is broken, resulting in to a hollow or tube wave (onda in Italian).

The heart of the Collection is the structure, an aluminum band sustaining the cushions and becoming the iconic element of the whole Collection. Characterized by fluid lines - as the ones of the wave - the band beyond being an aesthetic element becomes also a functional element, a rigid armrest that can be used to lean objects. The choice of the materials come from the Pininfarina 360° design experience: the aluminum - coming from the car sector - for the structure , the fabrics - used in the yachts for its resistance - for the cushions.

"We have looked at the magic of nature to give life to Onda which is distinctive and, at the same time, able to be integrated in different environments. Technology and know-how coming from different sectors make it really unique" affirms Paolo Pininfarina, Pininfarina Chairman.

"Pininfarina always brings breakthrough visions and futuristic designs to the world. The design of Onda is influenced by car design in the technology and in the use of top materials. We are sure the new revolution is ready in the outdoor furniture industry!" affirms Alwin Ou, Chairman of Higold Group.

Onda is the second project born from the collaboration between Higold and Pininfarina, after the Higold headquarters in Shunde presented in march 2017.





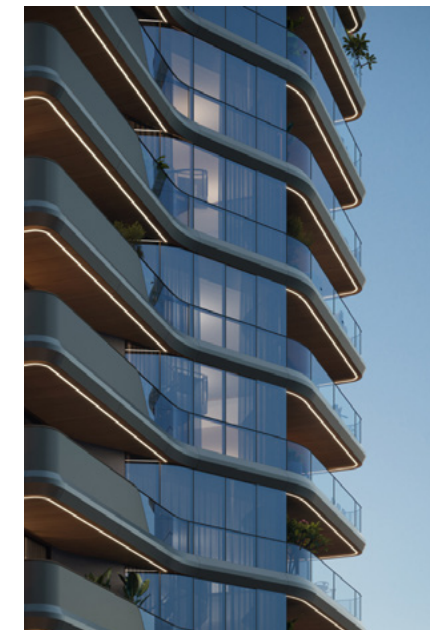
wing



DESIGN OF PININFARINA
OUTDOOR FURNITURE

Inspired by the lightness of wing, the archetype par excellence that combines lightness and strength-in the WING collection, the designers were guided by the concept of physical and perceived lightness.

The dynamic, pure and elegant lines give the collection a style suitable for both urban contexts and environments where nature is the protagonist. The elements of the collection are characterized by a folded aluminum structure and enriched by geometric and essential lines that recall the world of architecture.



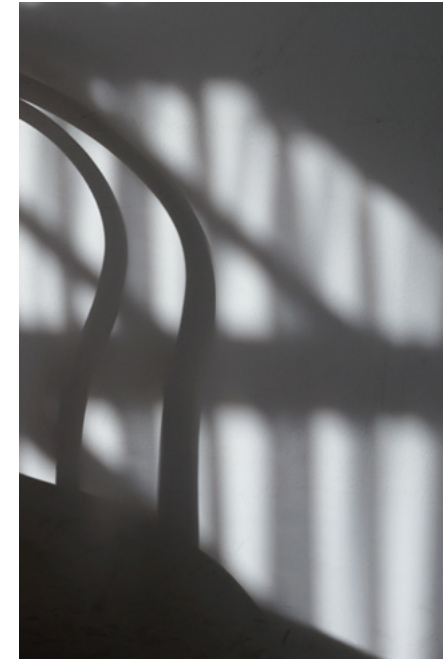
wing
by pininfarina





LEO

DESIGNED BY CLAUDIO BELLINI Studio



An exciting blast inspiration from the Sixties. This collection is a clear reference to the 60s world where harmony and calm were essential. Convenience and comfort, stability, lightness and adaptability are the main features of this outdoor furniture. This is LEO collection, characterised by the decisive sign of the armrests, which represent its distinctive feature such as the essentiality of the lines. The curved armrest has a strong character and gives a sense of lightness. The backrest with woven rope brings nature and richness to this collection.

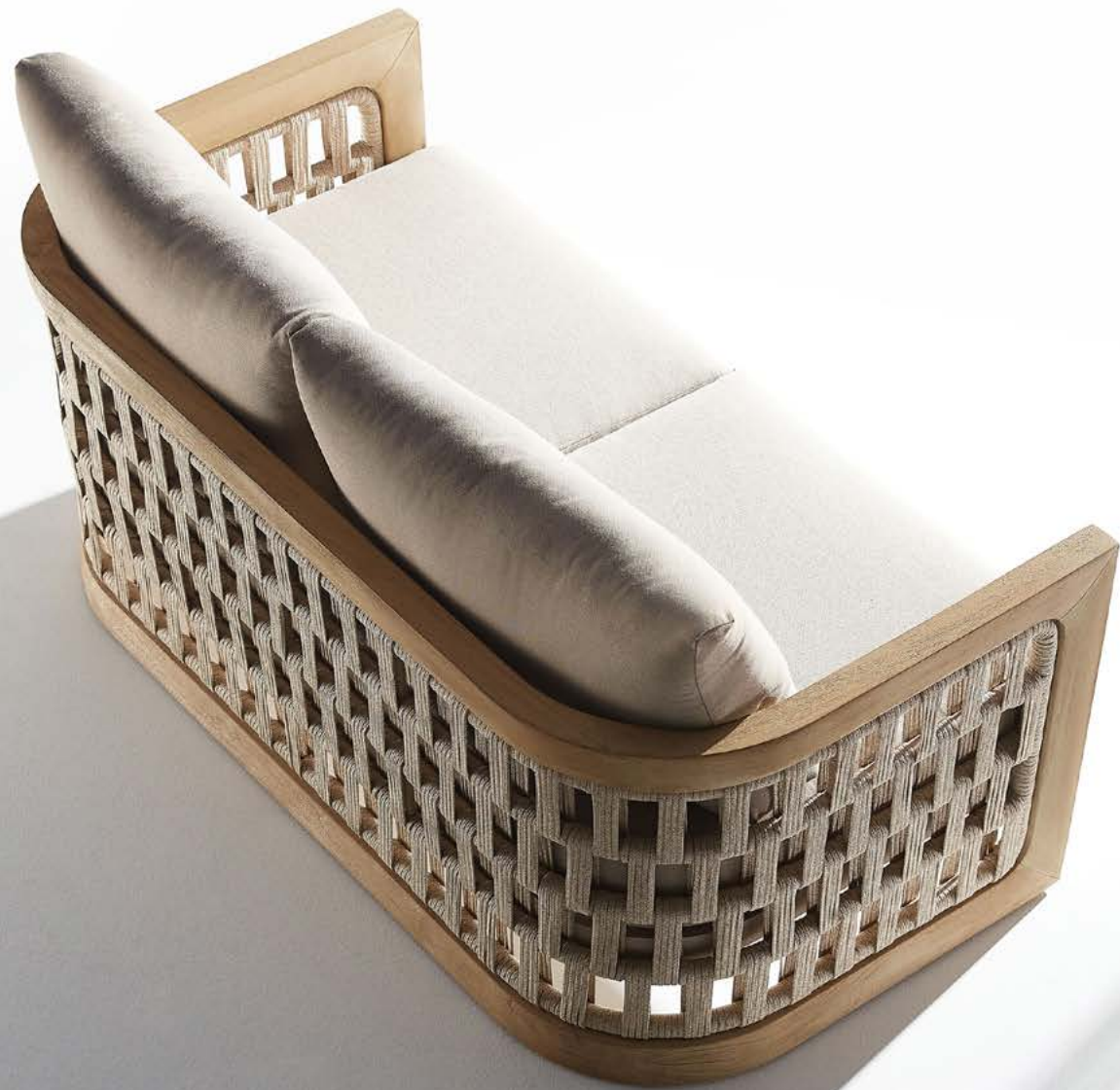
LEO

DESIGNED BY CLAUDIO BELLINI Studio









RIVA

DESIGNED BY CLAUDIO BELLINI Studio



In a game of solids and voids, of lights and shadows, the RIVA collection is born. It takes inspiration from the Moorish style of Andalusian architecture and it is characterised by its severe and essential lines. The empty spaces, created by the particular making of the yarn, bring to mind the arches of the Palace of Carlos V in Granada. A touch of Spain in your house.



RIVA

DESIGNED BY CLAUDIO BELLINI Studio



The leisurely and elegant weaving outlines the ever-changing light and shadow.



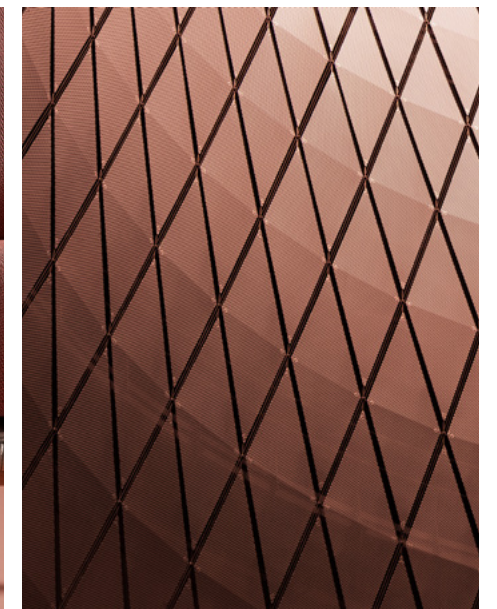




vasca

DESIGNED BY CLAUDIO BELLINI Studio

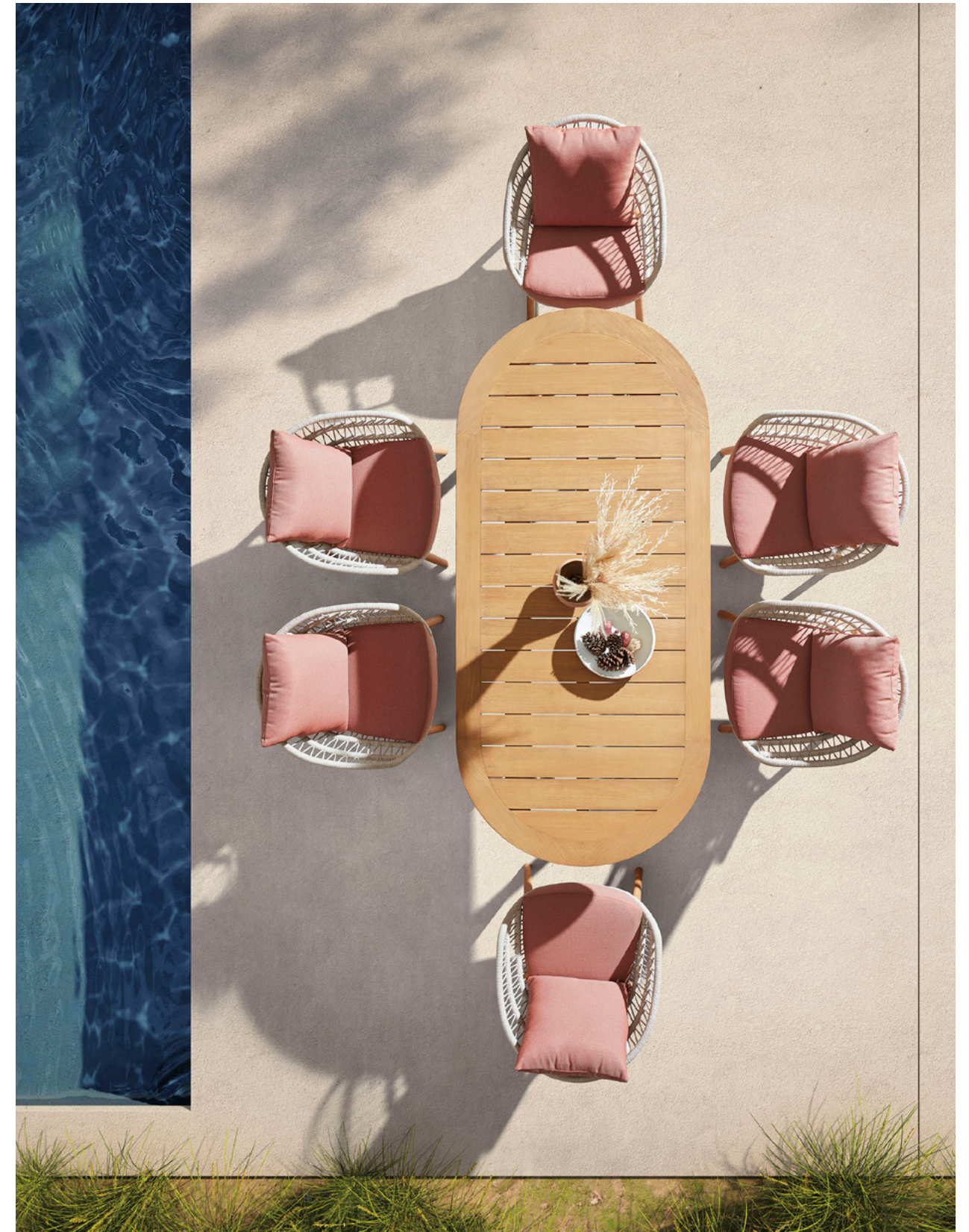
You will feel asleep cradled in the arms of VASCA collection. It takes inspiration from the long summer days, when you are so tired that the only thing you would do is to be rocked by the light of the moon. The weavings of the furnitures' structure remind you of the cord of an hammock childhood. It leaves in your soul the sensation of light-heartedness, well-being and levity, perfect mix at the end of a demanding day. Its rounded shapes and soft cushions convey a harmony and sense of calm. The wooden parts bring back a warm and gentle atmosphere.



vasca

DESIGNED BY CLAUDIO BELLINI Studio





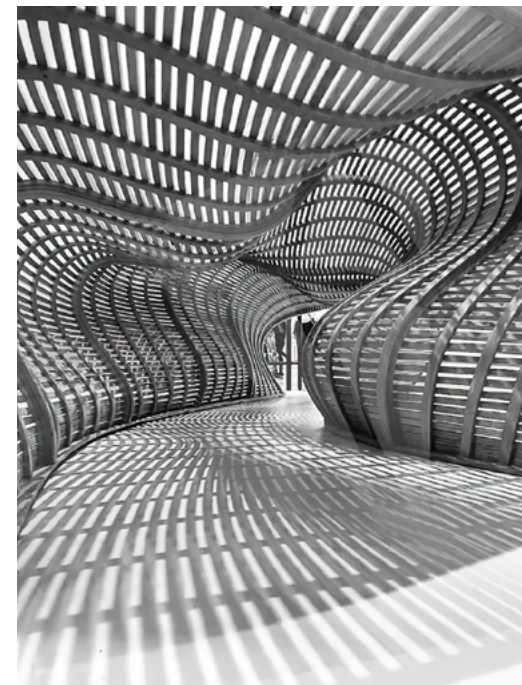




AiO

DESIGNED BY CLAUDIO BELLINI Studio

A collection that is inspired by the charm of Italy, its naturally expressive sceneries, relaxing seashores, and sunshine that is still and pure. The AiO collection is a feeling of absolute relaxation and comfort that envelops you and takes you to the exact Italian feeling. The majestic and refreshing texture of sands inspires the grains and surface of this collection. A sight to the eyes with its special and distinct color, especially when the sun shines on it highlighting its detailed textures. The iconic element of this collection is done with rope, which is known to be strong and tough material. The blend and showcasing of rope details with smooth curved silhouettes make this collection one to remember!



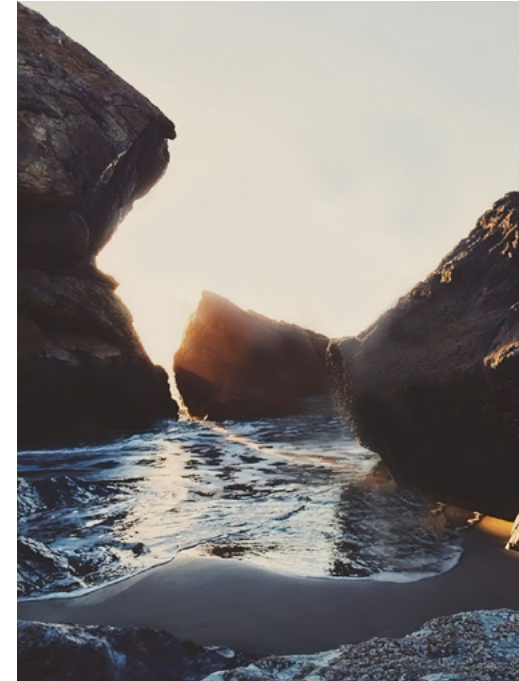






CAMBUSA

DESIGNED BY CLAUDIO BELLINI Studio



CAMBUSA takes inspiration from the sea that appears golden beneath the sun-lit sky. As the sunbeams onto each piece from this collection, it takes shape and accentuates the detailed gradients and elements. An exemplary display of smooth and precise design that showcases clean-cut square features in an enlivening manner. Just as the sun, warm and inviting shades are used to accomplish a collection that is made to suit the surrounding with utmost finesse. Just as the sea grants new hope, this collection is designed with hopes of delivering extreme comfort and a welcoming feeling.

CAMBUSA

DESIGNED BY CLAUDIO BELLINI Studio





NOFI

NOFI collection is composed by living sofa set, sectional sofa set, dining set, bar set, sun bed and swing. It is one of the collections that have a complete family to meet all kinds of living demands. With wooden elements to be installed on the armrests and table tops and with soft and airy cushion designs, Nofi shows simplicity but never loses its coziness. With DIY concept, consumer can easily do the assembling under instructions.







wing PARASOL
by pininfarina





CANTON FAIR DESIGN AWARD
2023 Gold Award



LEVIA PARASOL

by pininfarina





SICILIA PARASOL





PROJECTS GALLERY

HIGOLD®



55 FIFTYFIVE

Poltu Quatu, Sardinia, La Spezia in Italy

Products:

- Airport
- New York



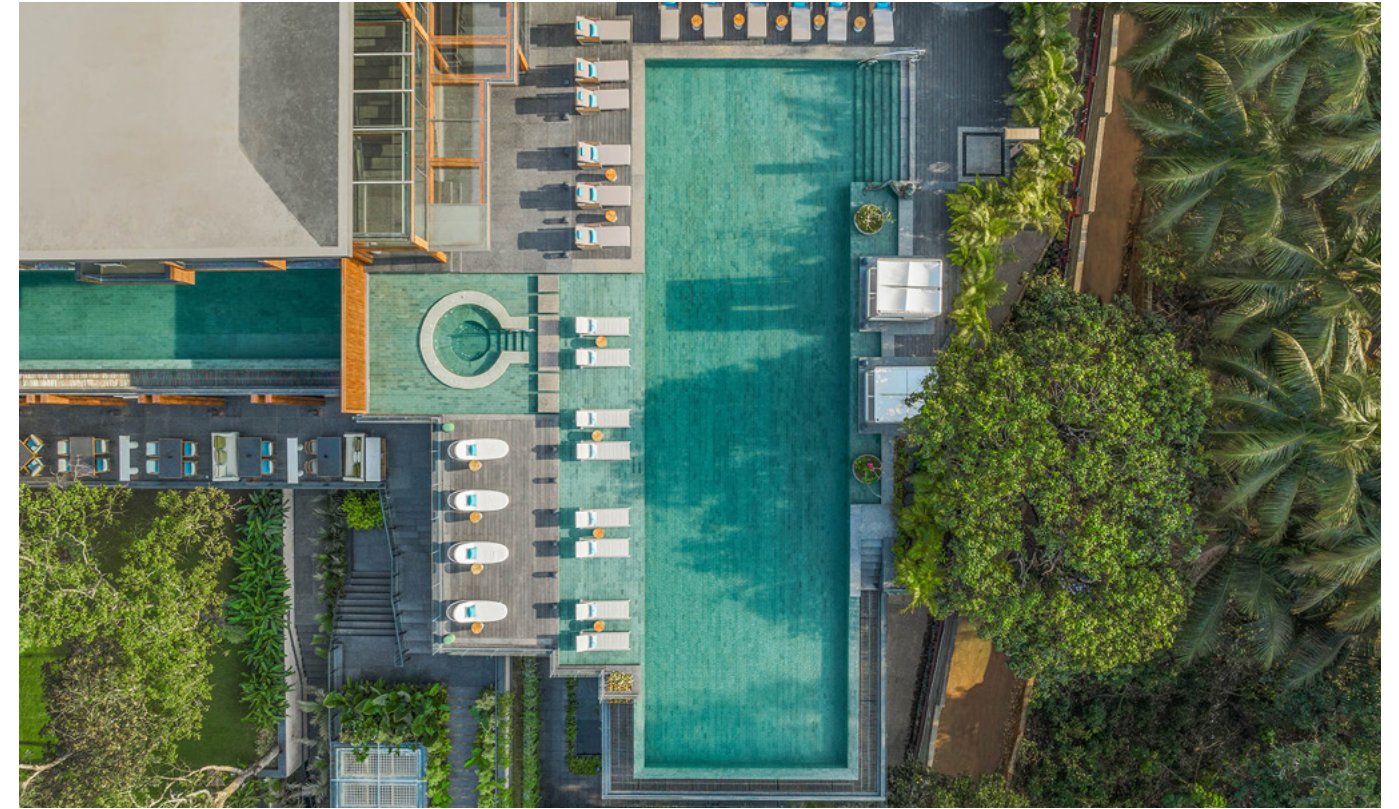
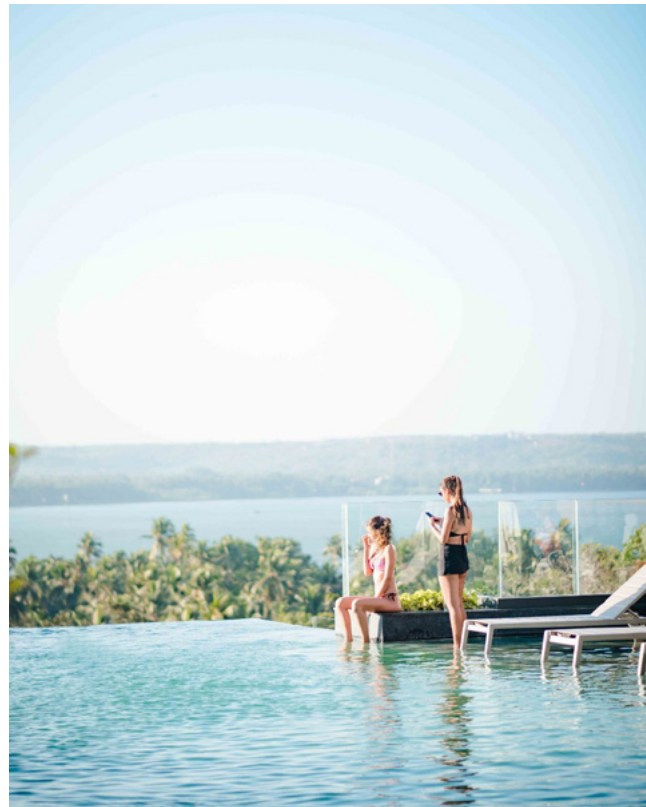


JW MARRIOTT GOA

India

Products:

- GENEVA
- YORK
- EMOTI
- GLORIA
- SHENZHOU X
- ICOO

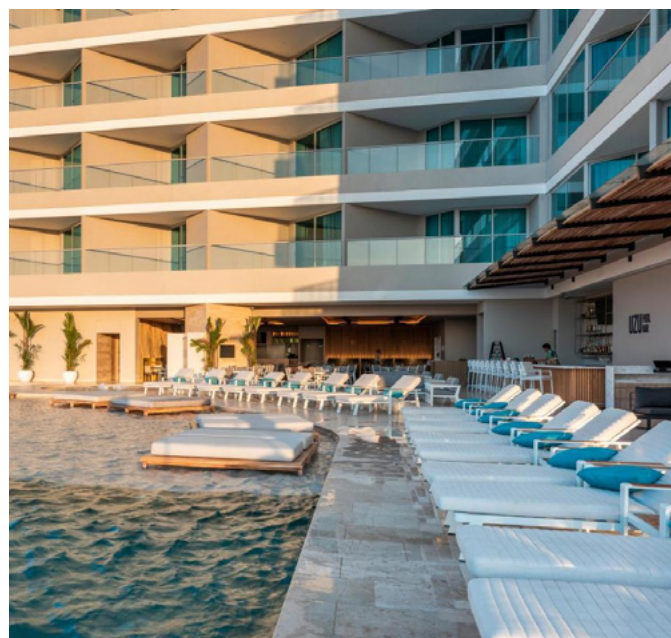




HILTON SANTA MARTA
Colombia

Products:

- NOFI
- EMOTI
- YORK
- CHAMPION
- ICOO

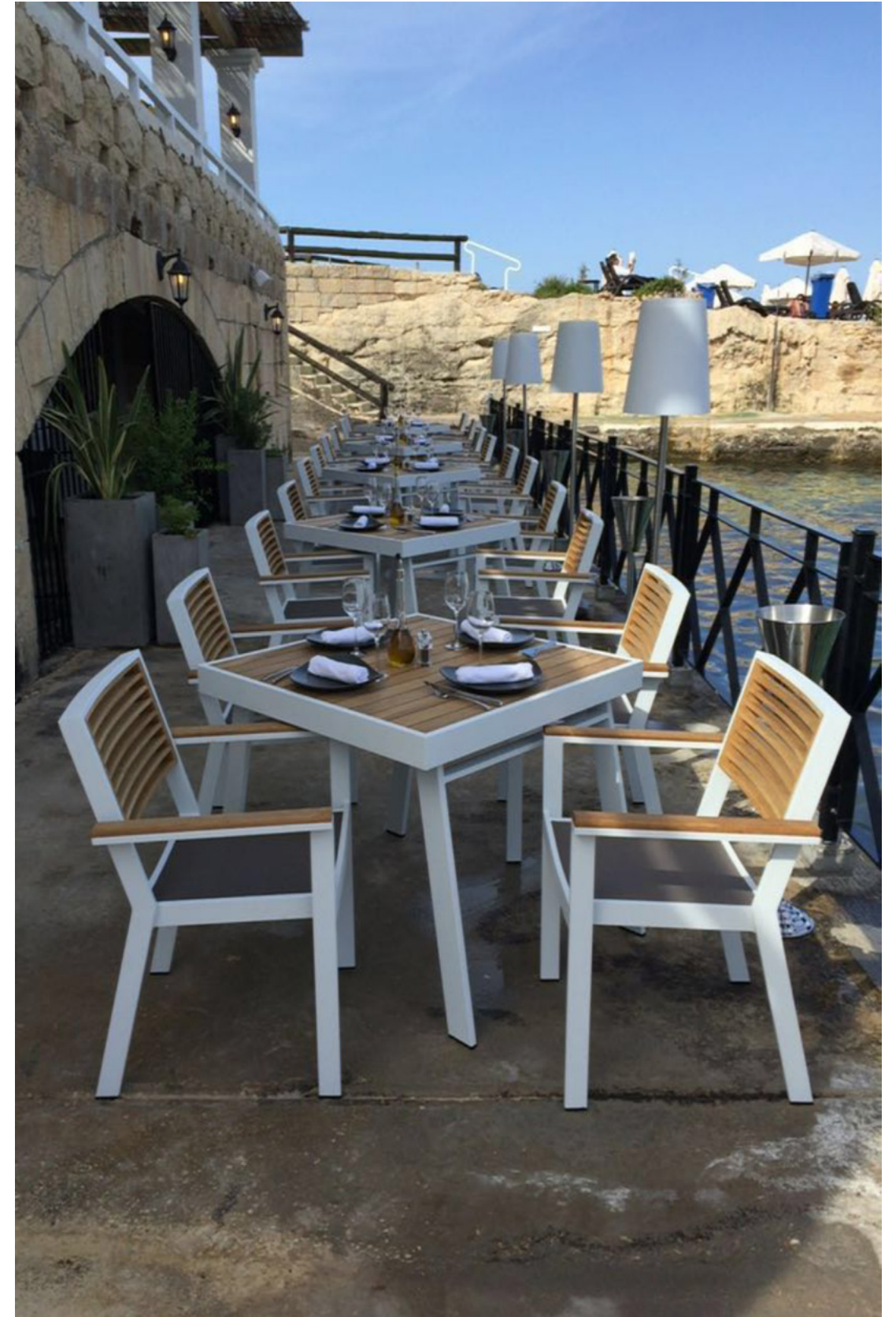




Westin
Malta

Products:

- YORK

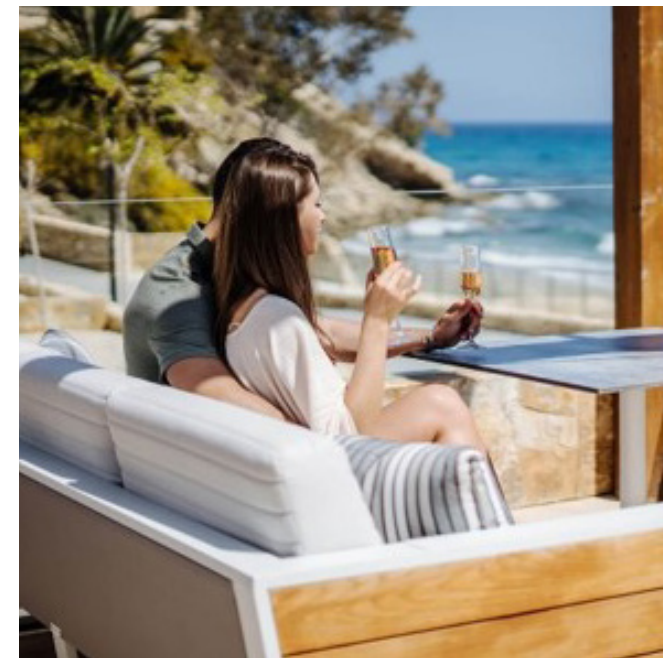
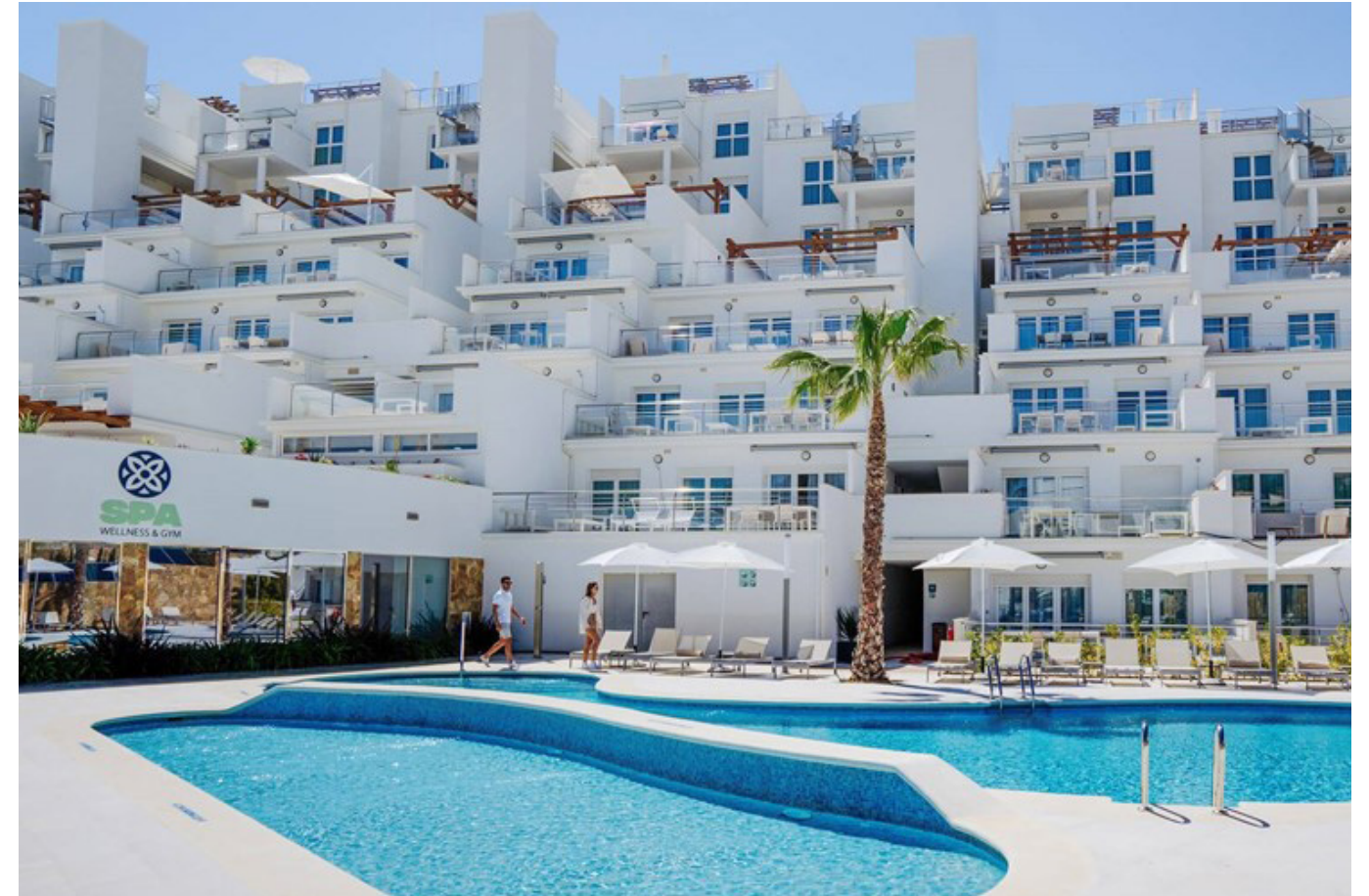
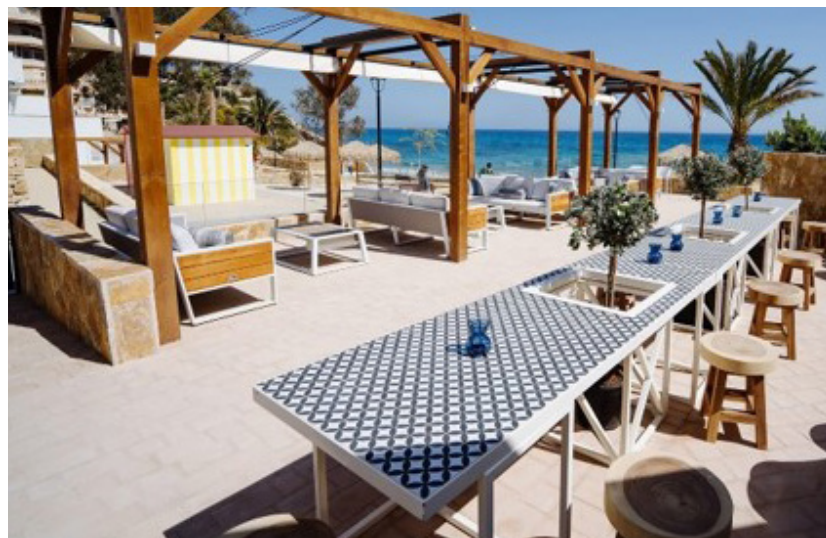




Dormio Resort Costa Blanca Beach & Spa
Spain

Products:

- YORK





Ikos Resort

Greece & Spain

Products:

- GENEVA
- PALACE
- SHENZHOU X
- EMOTI



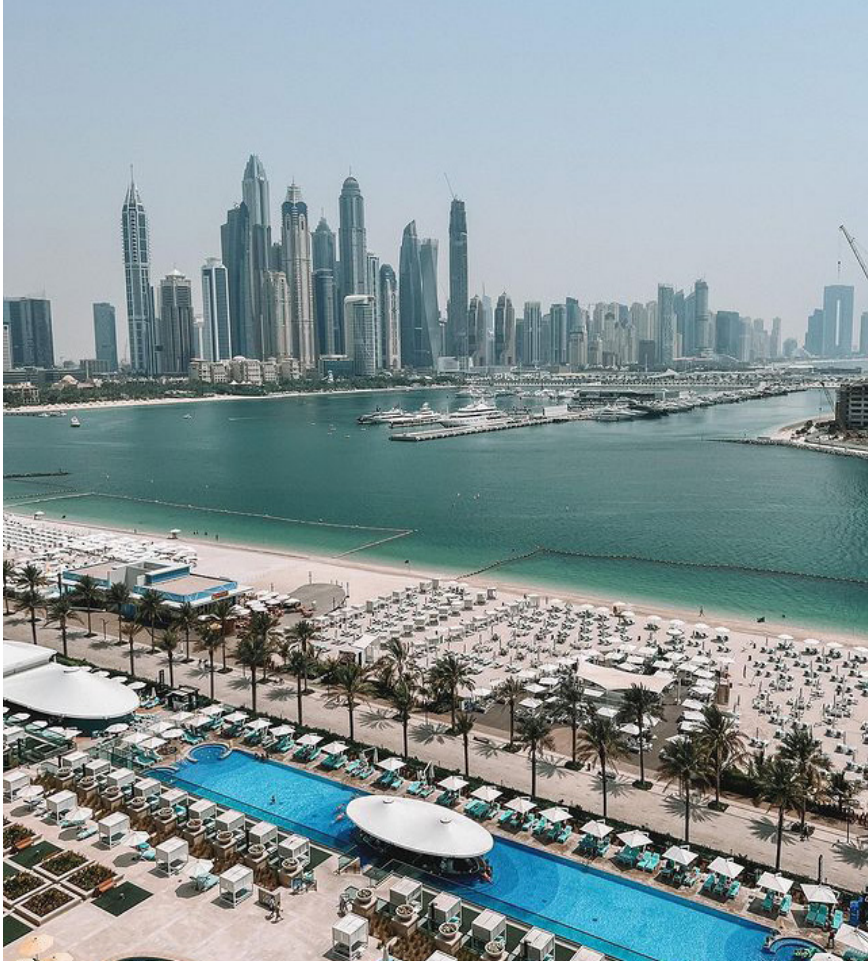


The First Collection Business Bay Dubai

Products:

- GENEVA
- SHENZHOU X
- NOFI
- GLORIA
- CHAMPION





Hilton Dubai Palm Jumeirah
Dubai





Marriott Resort Palm Jumeirah
Dubai





Taj Exotica Resort & Spa, The Palm
Dubai





Hotel Quelle Nature Spa Resort
Italy

Products:

- YORK





Regal Heights Hotel
Egypt

Products:

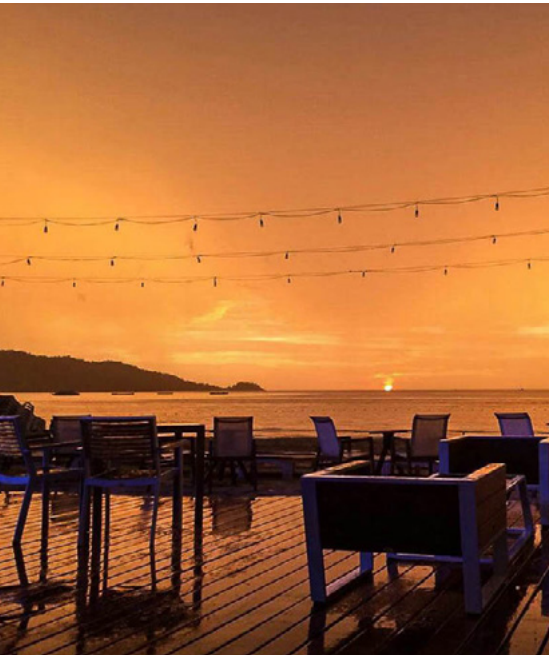
- NOFI
- AIRPORT
- HAWAII
- CLINT





Kudo beach club
Phuket, Thailand

Products:
- YORK



Wadi Rum Desert Resort
Jordan

Products:

- YORK
- NOFI
- HAWAII
- CHAMPION
- CLINT



Haeundae Beach Golf & Resort
Korea

Products:

- NEW YORK
- POLO 2.0
- TULIP



Sani Resort
Greece

Products:

- GENEVA
- LYRE
- TULIP
- TEAKMAN

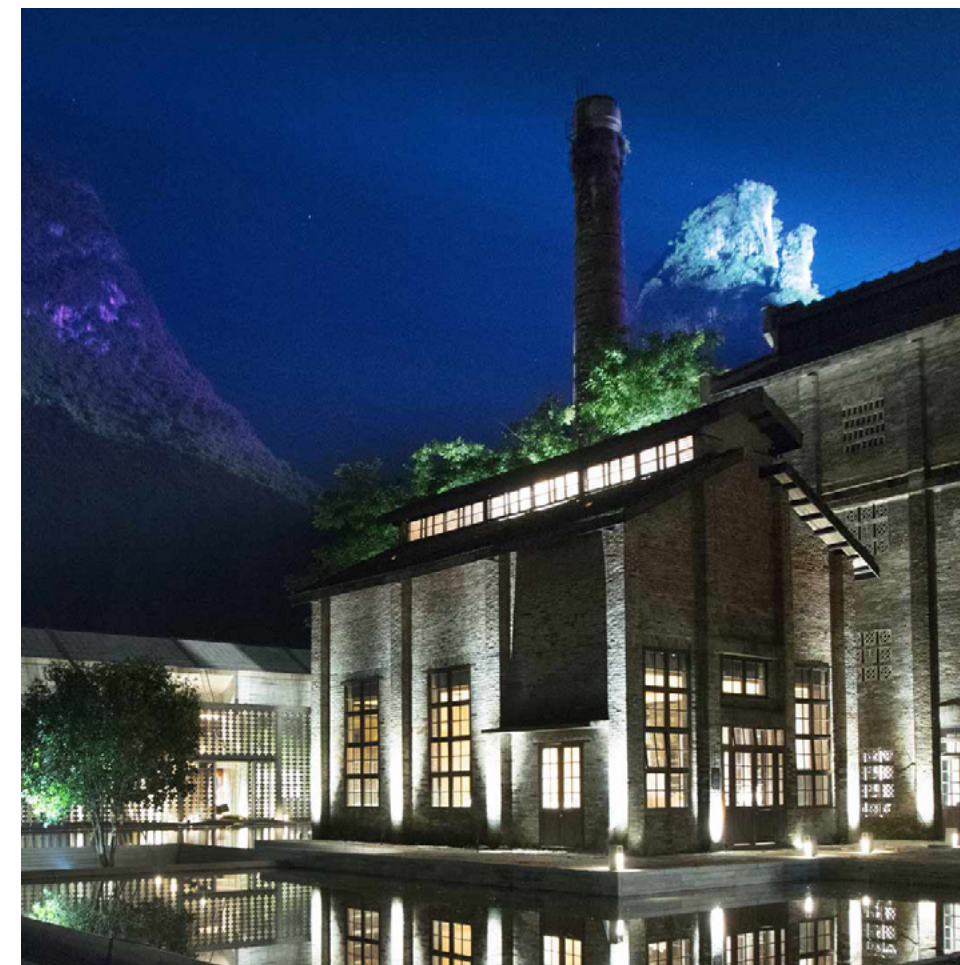


WEST LAKE GOLF CLUB
Hangzhou, China

Products:

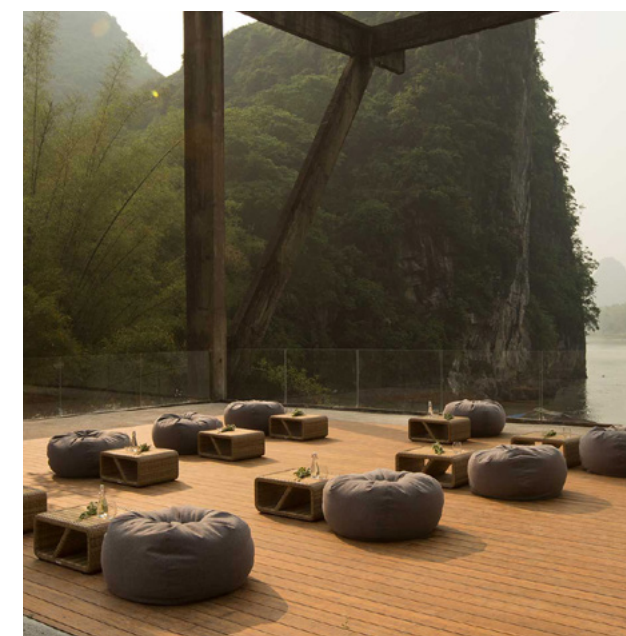
- AIRPORT
- HESTIA
- NOFI 3.0
- YORK





Yangshuo Sugarhouse (Alila)
Guangxi, China

Products:
- PALACE





YANGZHOU GUEST HOUSE

Yangzhou, China

Products:

- GENEVA
- EMOTI
- NOFI 3.0
- AIRPORT
- CLARK





Thousand Island Lake Mingho International Resort

Hangzhou, China

Products:

- ONDA
- GENEVA
- NOFI





Huawei Songshan Lake

Guangdong, China

Products:

- AIRPORT

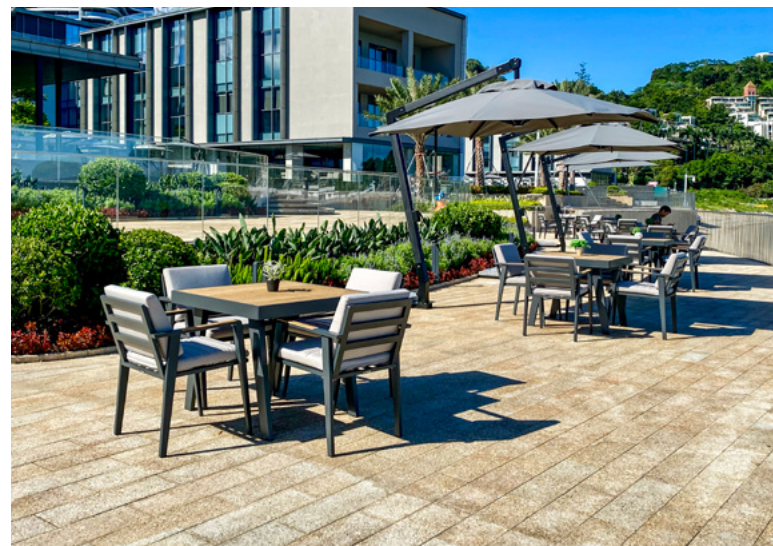




Intercontinental Damaisha Resort
Shenzhen, China

Products:

- EMOTI
- NEW YORK





Xunliao Bay Resort
Guangdong, China

Products:

- ONDA
- NOFI
- EMOTI

